

## Verification Report

No. TSNEC2200191801

Date: 04 Mar 2022

Page 1 of 13

Client Name : JINZHOU KAIMEI POWER CO.,LTD

Client Address : NO.141 JINYI STREET ,LINGHE DISTRICT,JINZHOU CITY, LIAONING PROVINCE

Sample Name : COIN-TYPE SUPERCAPACITOR

The above sample(s) and information were provided by the client.

SGS Job No. : TP22-000668 - TJ

Date of Sample Received : 15 Feb 2022

Verification Period : 15 Feb 2022 - 25 Feb 2022

Verification Requested : With reference to RoHS Directive (EU) 2015/863 amending 2011/65/EU

Verification Method : Please refer to next page(s).

Verification Result : Please refer to next page(s).

Verification Conclusion : Based on the verification results of the submitted samples, the results of Lead, Mercury, Cadmium, Hexavalent chromium, Polybrominated biphenyls (PBBs), Polybrominated diphenyl ethers (PBDEs) and Phthalates such as Bis(2-ethylhexyl) phthalate (DEHP) , Butyl benzyl phthalate (BBP), Dibutyl phthalate (DBP) , and Diisobutyl phthalate (DIBP) comply with the limits as set by RoHS Directive (EU) 2015/863 amending Annex II to Directive 2011/65/EU.

Signed for and on behalf of  
SGS-CSTC Standards Technical Services (Tianjin) Co., Ltd.

Jason Li

Jason Li  
Approved Signatory

scan to see the report



CCD7A8EF



Unless otherwise agreed in writing, this document is issued by the Company subject to its General Conditions of Service printed overleaf, available on request or accessible at <http://www.sgs.com/en/Terms-and-Conditions.aspx> and, for electronic format documents, subject to Terms and Conditions for Electronic Documents at <http://www.sgs.com/en/Terms-and-Conditions/Terms-e-Document.aspx>. Attention is drawn to the limitation of liability, indemnification and jurisdiction issues defined therein. Any holder of this document is advised that information contained hereon reflects the Company's findings at the time of its intervention only and within the limits of Client's instructions, if any. The Company's sole responsibility is to its Client and this document does not exonerate parties to a transaction from exercising all their rights and obligations under the transaction documents. This document cannot be reproduced except in full, without prior written approval of the Company. Any unauthorized alteration, forgery or falsification of the content or appearance of this document is unlawful and offenders may be prosecuted to the fullest extent of the law. Unless otherwise stated the results shown in this test report refer only to the sample(s) tested.

Attention: To check the authenticity of testing /inspection report & certificate, please contact us at telephone: (86-755) 8307 1443, or email: [CN.Doccheck@sgs.com](mailto:CN.Doccheck@sgs.com)

SGS Mansion, No.41, The 5th Avenue TEDA, Tianjin, China 300457  
中国·天津市经济技术开发区第五大街41号SGS大厦

t (86-22) 65288000  
t (86-22) 65288000

[www.sgs.com](http://www.sgs.com)  
[sgs.china@sgs.com](mailto:sgs.china@sgs.com)

Verification Method :

1. With reference to IEC 62321-2:2013, review was performed for the samples disjointed from the submitted articles.
2. With reference to IEC 62321-1:2013, tests were performed for the samples indicated by the photos in this report
  - (1) With reference to IEC 62321-3-1:2013, screening by EDXRF spectroscopy.
  - (2) Wet chemical test method: With reference to IEC 62321-4:2013+AMD1:2017, IEC62321-5:2013, IEC 62321-7-1:2015, IEC 62321-7-2:2017, ISO 17075-1:2017, IEC 62321-6:2015 and IEC62321-8:2017, analyzed by ICP-OES,UV-Vis and GC-MS.

Part No.	Part Description	Restricted Substances	Results of EDXRF <sup>(1)</sup>	Screening Result of PHTH <sup>(2)</sup>	Result of Wet Chemical Testing <sup>(3)</sup> (mg/kg)	Conclusion	Sample Submitted / Resubmitted Date
1	Blue plastic	Pb	BL	---	---	Comply	15 Feb 2022
		Cd	BL	---	---	Comply	
		Hg	BL	---	---	Comply	
		Cr(VI)▼	BL	---	---	Comply	
		PBBs	BL	---	---	Comply	
		PBDEs	BL	---	---	Comply	
		DBP	---	BL	---	Comply	
		BBP	---	BL	---	Comply	
		DEHP	---	BL	---	Comply	
		DIBP	---	BL	---	Comply	



Unless otherwise agreed in writing, this document is issued by the Company subject to its General Conditions of Service printed overleaf, available on request or accessible at <http://www.sgs.com/en/Terms-and-Conditions.aspx> and, for electronic format documents, subject to Terms and Conditions for Electronic Documents at <http://www.sgs.com/en/Terms-and-Conditions/Terms-e-Documents.aspx>. Attention is drawn to the limitation of liability, indemnification and jurisdiction issues defined therein. Any holder of this document is advised that information contained hereon reflects the Company's findings at the time of its intervention only and within the limits of Client's instructions, if any. The Company's sole responsibility is to its Client and this document does not exonerate parties to a transaction from exercising all their rights and obligations under the transaction documents. This document cannot be reproduced except in full, without prior written approval of the Company. Any unauthorized alteration, forgery or falsification of the content or appearance of this document is unlawful and offenders may be prosecuted to the fullest extent of the law. Unless otherwise stated the results shown in this test report refer only to the sample(s) tested.

Attention: To check the authenticity of testing /inspection report & certificate, please contact us at telephone: (86-755) 8307 1443, or email: [CN.Doccheck@sgs.com](mailto:CN.Doccheck@sgs.com)

SGS Mansion, No.41, The 5th Avenue TEDA, Tianjin, China 300457  
 中国·天津市经济技术开发区第五大街41号SGS大厦 邮编: 300457

t (86-22) 65288000 www.sgsgroup.com.cn  
 t (86-22) 65288000 sgs.china@sgs.com

Part No.	Part Description	Restricted Substances	Results of EDXRF <sup>(1)</sup>	Screening Result of PHTH <sup>(2)</sup>	Result of Wet Chemical Testing <sup>(3)</sup> (mg/kg)	Conclusion	Sample Submitted / Resubmitted Date
2	Silvery metal	Pb	BL	---	---	Comply	15 Feb 2022
		Cd	BL	---	---	Comply	
		Hg	BL	---	---	Comply	
		Cr(VI)▼	IN	---	ND	Comply	
		PBBs	---	---	---	---	
		PBDEs	---	---	---	---	
		DBP	---	---	---	---	
		BBP	---	---	---	---	
		DEHP	---	---	---	---	
		DIBP	---	---	---	---	
3	Silvery metal	Pb	BL	---	---	Comply	15 Feb 2022
		Cd	BL	---	---	Comply	
		Hg	BL	---	---	Comply	
		Cr(VI)▼	IN	---	ND	Comply	
		PBBs	---	---	---	---	
		PBDEs	---	---	---	---	
		DBP	---	---	---	---	
		BBP	---	---	---	---	
		DEHP	---	---	---	---	
		DIBP	---	---	---	---	



Unless otherwise agreed in writing, this document is issued by the Company subject to its General Conditions of Service printed overleaf, available on request or accessible at <http://www.sgs.com/en/Terms-and-Conditions.aspx> and, for electronic format documents, subject to Terms and Conditions for Electronic Documents at <http://www.sgs.com/en/Terms-and-Conditions/Terms-e-Document.aspx>. Attention is drawn to the limitation of liability, indemnification and jurisdiction issues defined therein. Any holder of this document is advised that information contained hereon reflects the Company's findings at the time of its intervention only and within the limits of Client's instructions, if any. The Company's sole responsibility is to its Client and this document does not exonerate parties to a transaction from exercising all their rights and obligations under the transaction documents. This document cannot be reproduced except in full, without prior written approval of the Company. Any unauthorized alteration, forgery or falsification of the content or appearance of this document is unlawful and offenders may be prosecuted to the fullest extent of the law. Unless otherwise stated the results shown in this test report refer only to the sample(s) tested.

Attention: To check the authenticity of testing / inspection report & certificate, please contact us at telephone: (86-755) 8307 1443, or email: [CN.Doccheck@sgs.com](mailto:CN.Doccheck@sgs.com)

Part No.	Part Description	Restricted Substances	Results of EDXRF <sup>(1)</sup>	Screening Result of PHTH <sup>(2)</sup>	Result of Wet Chemical Testing <sup>(3)</sup> (mg/kg)	Conclusion	Sample Submitted / Resubmitted Date
4	Silvery metal	Pb	BL	---	---	Comply	15 Feb 2022
		Cd	BL	---	---	Comply	
		Hg	BL	---	---	Comply	
		Cr(VI)▼	IN	---	ND	Comply	
		PBBs	---	---	---	---	
		PBDEs	---	---	---	---	
		DBP	---	---	---	---	
		BBP	---	---	---	---	
		DEHP	---	---	---	---	
		DIBP	---	---	---	---	
5	White plastic	Pb	BL	---	---	Comply	15 Feb 2022
		Cd	BL	---	---	Comply	
		Hg	BL	---	---	Comply	
		Cr(VI)▼	BL	---	---	Comply	
		PBBs	BL	---	---	Comply	
		PBDEs	BL	---	---	Comply	
		DBP	---	BL	---	Comply	
		BBP	---	BL	---	Comply	
		DEHP	---	BL	---	Comply	
		DIBP	---	BL	---	Comply	



Unless otherwise agreed in writing, this document is issued by the Company subject to its General Conditions of Service printed overleaf, available on request or accessible at <http://www.sgs.com/en/Terms-and-Conditions.aspx> and, for electronic format documents, subject to Terms and Conditions for Electronic Documents at <http://www.sgs.com/en/Terms-and-Conditions/Terms-e-Documents.aspx>. Attention is drawn to the limitation of liability, indemnification and jurisdiction issues defined therein. Any holder of this document is advised that information contained hereon reflects the Company's findings at the time of its intervention only and within the limits of Client's instructions, if any. The Company's sole responsibility is to its Client and this document does not exonerate parties to a transaction from exercising all their rights and obligations under the transaction documents. This document cannot be reproduced except in full, without prior written approval of the Company. Any unauthorized alteration, forgery or falsification of the content or appearance of this document is unlawful and offenders may be prosecuted to the fullest extent of the law. Unless otherwise stated the results shown in this test report refer only to the sample(s) tested.

Attention: To check the authenticity of testing /inspection report & certificate, please contact us at telephone: (86-755) 8307 1443, or email: [CN.Doccheck@sgs.com](mailto:CN.Doccheck@sgs.com)

Part No.	Part Description	Restricted Substances	Results of EDXRF <sup>(1)</sup>	Screening Result of PHTH <sup>(2)</sup>	Result of Wet Chemical Testing <sup>(3)</sup> (mg/kg)	Conclusion	Sample Submitted / Resubmitted Date
6	Silvery metal	Pb	BL	---	---	Comply	15 Feb 2022
		Cd	BL	---	---	Comply	
		Hg	BL	---	---	Comply	
		Cr(VI)▼	BL	---	---	Comply	
		PBBs	---	---	---	---	
		PBDEs	---	---	---	---	
		DBP	---	---	---	---	
		BBP	---	---	---	---	
		DEHP	---	---	---	---	
		DIBP	---	---	---	---	
7	Silvery metal	Pb	BL	---	---	Comply	15 Feb 2022
		Cd	BL	---	---	Comply	
		Hg	BL	---	---	Comply	
		Cr(VI)▼	BL	---	---	Comply	
		PBBs	---	---	---	---	
		PBDEs	---	---	---	---	
		DBP	---	---	---	---	
		BBP	---	---	---	---	
		DEHP	---	---	---	---	
		DIBP	---	---	---	---	



Unless otherwise agreed in writing, this document is issued by the Company subject to its General Conditions of Service printed overleaf, available on request or accessible at <http://www.sgs.com/en/Terms-and-Conditions.aspx> and, for electronic format documents, subject to Terms and Conditions for Electronic Documents at <http://www.sgs.com/en/Terms-and-Conditions/Terms-e-Documents.aspx>. Attention is drawn to the limitation of liability, indemnification and jurisdiction issues defined therein. Any holder of this document is advised that information contained hereon reflects the Company's findings at the time of its intervention only and within the limits of Client's instructions, if any. The Company's sole responsibility is to its Client and this document does not exonerate parties to a transaction from exercising all their rights and obligations under the transaction documents. This document cannot be reproduced except in full, without prior written approval of the Company. Any unauthorized alteration, forgery or falsification of the content or appearance of this document is unlawful and offenders may be prosecuted to the fullest extent of the law. Unless otherwise stated the results shown in this test report refer only to the sample(s) tested.

Attention: To check the authenticity of testing /inspection report & certificate, please contact us at telephone: (86-755) 8307 1443, or email: [CN.Doccheck@sgs.com](mailto:CN.Doccheck@sgs.com)

Part No.	Part Description	Restricted Substances	Results of EDXRF <sup>(1)</sup>	Screening Result of PHTH <sup>(2)</sup>	Result of Wet Chemical Testing <sup>(3)</sup> (mg/kg)	Conclusion	Sample Submitted / Resubmitted Date
8	Silvery metal	Pb	BL	---	---	Comply	15 Feb 2022
		Cd	BL	---	---	Comply	
		Hg	BL	---	---	Comply	
		Cr(VI)▼	IN	---	ND	Comply	
		PBBs	---	---	---	---	
		PBDEs	---	---	---	---	
		DBP	---	---	---	---	
		BBP	---	---	---	---	
		DEHP	---	---	---	---	
		DIBP	---	---	---	---	
9	Gray plastic	Pb	BL	---	---	Comply	15 Feb 2022
		Cd	BL	---	---	Comply	
		Hg	BL	---	---	Comply	
		Cr(VI)▼	BL	---	---	Comply	
		PBBs	BL	---	---	Comply	
		PBDEs	BL	---	---	Comply	
		DBP	---	BL	---	Comply	
		BBP	---	BL	---	Comply	
		DEHP	---	BL	---	Comply	
		DIBP	---	BL	---	Comply	



Unless otherwise agreed in writing, this document is issued by the Company subject to its General Conditions of Service printed overleaf, available on request or accessible at <http://www.sgs.com/en/Terms-and-Conditions.aspx> and, for electronic format documents, subject to Terms and Conditions for Electronic Documents at <http://www.sgs.com/en/Terms-and-Conditions/Terms-e-Documents.aspx>. Attention is drawn to the limitation of liability, indemnification and jurisdiction issues defined therein. Any holder of this document is advised that information contained hereon reflects the Company's findings at the time of its intervention only and within the limits of Client's instructions, if any. The Company's sole responsibility is to its Client and this document does not exonerate parties to a transaction from exercising all their rights and obligations under the transaction documents. This document cannot be reproduced except in full, without prior written approval of the Company. Any unauthorized alteration, forgery or falsification of the content or appearance of this document is unlawful and offenders may be prosecuted to the fullest extent of the law. Unless otherwise stated the results shown in this test report refer only to the sample(s) tested.

Attention: To check the authenticity of testing / inspection report & certificate, please contact us at telephone: (86-755) 8307 1443, or email: [CN.Doccheck@sgs.com](mailto:CN.Doccheck@sgs.com)

SGS Mansion, No.41, The 5th Avenue TEDA, Tianjin, China 300457  
 中国·天津市经济技术开发区第五大街41号SGS大厦 邮编: 300457

t (86-22) 65288000 www.sgs.com.cn  
 t (86-22) 65288000 sgs.china@sgs.com

Part No.	Part Description	Restricted Substances	Results of EDXRF <sup>(1)</sup>	Screening Result of PHTH <sup>(2)</sup>	Result of Wet Chemical Testing <sup>(3)</sup> (mg/kg)	Conclusion	Sample Submitted / Resubmitted Date
10	White paper	Pb	BL	---	---	Comply	15 Feb 2022
		Cd	BL	---	---	Comply	
		Hg	BL	---	---	Comply	
		Cr(VI)▼	BL	---	---	Comply	
		PBBs	BL	---	---	Comply	
		PBDEs	BL	---	---	Comply	
		DBP	---	BL	---	Comply	
		BBP	---	BL	---	Comply	
		DEHP	---	BL	---	Comply	
		DIBP	---	BL	---	Comply	
11	Black solid	Pb	BL	---	---	Comply	15 Feb 2022
		Cd	BL	---	---	Comply	
		Hg	BL	---	---	Comply	
		Cr(VI)▼	BL	---	---	Comply	
		PBBs	BL	---	---	Comply	
		PBDEs	BL	---	---	Comply	
		DBP	---	IN	ND	Comply	
		BBP	---	IN	ND	Comply	
		DEHP	---	IN	ND	Comply	
		DIBP	---	IN	ND	Comply	



Unless otherwise agreed in writing, this document is issued by the Company subject to its General Conditions of Service printed overleaf, available on request or accessible at <http://www.sgs.com/en/Terms-and-Conditions.aspx> and, for electronic format documents, subject to Terms and Conditions for Electronic Documents at <http://www.sgs.com/en/Terms-and-Conditions/Terms-e-Documents.aspx>. Attention is drawn to the limitation of liability, indemnification and jurisdiction issues defined therein. Any holder of this document is advised that information contained hereon reflects the Company's findings at the time of its intervention only and within the limits of Client's instructions, if any. The Company's sole responsibility is to its Client and this document does not exonerate parties to a transaction from exercising all their rights and obligations under the transaction documents. This document cannot be reproduced except in full, without prior written approval of the Company. Any unauthorized alteration, forgery or falsification of the content or appearance of this document is unlawful and offenders may be prosecuted to the fullest extent of the law. Unless otherwise stated the results shown in this test report refer only to the sample(s) tested.

Attention: To check the authenticity of testing /inspection report & certificate, please contact us at telephone: (86-755) 8307 1443, or email: [CN.Doccheck@sgs.com](mailto:CN.Doccheck@sgs.com)

SGS Mansion, No.41, The 5th Avenue TEDA, Tianjin, China 300457  
 中国·天津市经济技术开发区第五大街41号SGS大厦 邮编: 300457

t (86-22) 65288000 www.sgs.com.cn  
 t (86-22) 65288000 sgs.china@sgs.com

Part No.	Part Description	Restricted Substances	Results of EDXRF <sup>(1)</sup>	Screening Result of PHTH <sup>(2)</sup>	Result of Wet Chemical Testing <sup>(3)</sup> (mg/kg)	Conclusion	Sample Submitted / Resubmitted Date
12	Silvery metal	Pb	BL	---	---	Comply	15 Feb 2022
		Cd	BL	---	---	Comply	
		Hg	BL	---	---	Comply	
		Cr(VI)▼	IN	---	ND	Comply	
		PBBs	---	---	---	---	
		PBDEs	---	---	---	---	
		DBP	---	---	---	---	
		BBP	---	---	---	---	
		DEHP	---	---	---	---	
		DIBP	---	---	---	---	



Unless otherwise agreed in writing, this document is issued by the Company subject to its General Conditions of Service printed overleaf, available on request or accessible at <http://www.sgs.com/en/Terms-and-Conditions.aspx> and, for electronic format documents, subject to Terms and Conditions for Electronic Documents at <http://www.sgs.com/en/Terms-and-Conditions/Terms-e-Documents.aspx>. Attention is drawn to the limitation of liability, indemnification and jurisdiction issues defined therein. Any holder of this document is advised that information contained hereon reflects the Company's findings at the time of its intervention only and within the limits of Client's instructions, if any. The Company's sole responsibility is to its Client and this document does not exonerate parties to a transaction from exercising all their rights and obligations under the transaction documents. This document cannot be reproduced except in full, without prior written approval of the Company. Any unauthorized alteration, forgery or falsification of the content or appearance of this document is unlawful and offenders may be prosecuted to the fullest extent of the law. Unless otherwise stated the results shown in this test report refer only to the sample(s) tested.

Attention: To check the authenticity of testing / inspection report & certificate, please contact us at telephone: (86-755) 8307 1443, or email: [CN.Doccheck@sgs.com](mailto:CN.Doccheck@sgs.com)



**Remark**

- (1) (a) There are the results on total Br while test items on restricted substances are PBBs and PBDEs. There is the result on total Cr while test item on restricted substances is Cr(VI).
- (b) Results are obtained by EDXRF for primary screening, and further chemical testing by ICP-OES (for Cd, Pb, Hg), UV-Vis (for Cr(VI)) and GC-MS (for PBBs, PBDEs) is recommended to be performed if the concentration exceeds the below warning value according to IEC62321-3-1:2013 (unit: mg/kg).

Element	Polymer	Metal	Composite Materials
Cd	$BL \leq (70-3\sigma) < X < (130+3\sigma) \leq OL$	$BL \leq (70-3\sigma) < X < (130+3\sigma) \leq OL$	$LOD < X < (150+3\sigma) \leq OL$
Pb	$BL \leq (700-3\sigma) < X < (1300+3\sigma) \leq OL$	$BL \leq (700-3\sigma) < X < (1300+3\sigma) \leq OL$	$BL \leq (500-3\sigma) < X < (1500+3\sigma) \leq OL$
Hg	$BL \leq (700-3\sigma) < X < (1300+3\sigma) \leq OL$	$BL \leq (700-3\sigma) < X < (1300+3\sigma) \leq OL$	$BL \leq (500-3\sigma) < X < (1500+3\sigma) \leq OL$
Br	$BL \leq (300-3\sigma) < X$	Not Applicable	$BL \leq (250-3\sigma) < X$
Cr	$BL \leq (700-3\sigma) < X$	$BL \leq (700-3\sigma) < X$	$BL \leq (500-3\sigma) < X$

(c) BL = Below Limit, OL = Over Limit, IN = Inconclusive, LOD = Limit of Detection.

(d) The XRF screening test for RoHS elements – The reading may be different to the actual content in the sample be of non-uniformity composition.

- (2) (a) Screening results of PHTH are for primary screening, and further chemical testing by GC-MS (for DBP, BBP, DEHP and DIBP) are recommended to be performed if the concentration exceeds the below warning value(unit: mg/kg).

Compound	Polymer
DBP	$BL \leq 600 < X$
BBP	$BL \leq 600 < X$
DEHP	$BL \leq 600 < X$
DIBP	$BL \leq 600 < X$

- (3) (a) mg/kg = 0.0001%, MDL=Method detection Limit, ND = Not Detected (<MDL), --- = Not Applicable, - = Without BOM.

(b) Unit and MDL in wet chemical test

Test Item	Pb	Cd	Hg	DBP	BBP	DEHP	DIBP
Unit	mg/kg	mg/kg	mg/kg	mg/kg	mg/kg	mg/kg	mg/kg
MDL	10	10	10	100	100	100	100

The MDL for single compound of PBBs and PBDEs is 100 mg/kg,  
 MDL of Cr(VI) for polymer, composite and leather sample is 10 mg/kg.  
 MDL of Cr(VI) for metal sample is 0.10µg/cm<sup>2</sup>.



Unless otherwise agreed in writing, this document is issued by the Company subject to its General Conditions of Service printed overleaf, available on request or accessible at <http://www.sgs.com/en/Terms-and-Conditions.aspx> and, for electronic format documents, subject to Terms and Conditions for Electronic Documents at <http://www.sgs.com/en/Terms-and-Conditions/Terms-e-Document.aspx>. Attention is drawn to the limitation of liability, indemnification and jurisdiction issues defined therein. Any holder of this document is advised that information contained hereon reflects the Company's findings at the time of its intervention only and within the limits of Client's instructions, if any. The Company's sole responsibility is to its Client and this document does not exonerate parties to a transaction from exercising all their rights and obligations under the transaction documents. This document cannot be reproduced except in full, without prior written approval of the Company. Any unauthorized alteration, forgery or falsification of the content or appearance of this document is unlawful and offenders may be prosecuted to the fullest extent of the law. Unless otherwise stated the results shown in this test report refer only to the sample(s) tested.

Attention: To check the authenticity of testing /inspection report & certificate, please contact us at telephone: (86-755) 8307 1443, or email: [CN.Doccheck@sgs.com](mailto:CN.Doccheck@sgs.com)

SGS Mansion, No.41, The 5th Avenue TEDA, Tianjin, China 300457  
 中国·天津市经济技术开发区第五大街41号SGS大厦 邮编: 300457

t (86-22) 65288000 www.sgs.com.cn  
 t (86-22) 65288000 sgs.china@sgs.com

- (c) ▼ =Metal sample
  - a. The sample is positive for Cr(VI) if the Cr(VI) concentration is greater than 0.13 µg/cm<sup>2</sup>.  
The sample coating is considered to contain Cr(VI)
  - b. The sample is negative for Cr(VI) if Cr(VI) is ND (concentration less than 0.10 µg/cm<sup>2</sup>).  
The coating is considered a non- Cr(VI) based coating
  - c. The result between 0.10 µg/cm<sup>2</sup> and 0.13 µg/cm<sup>2</sup> is considered to be inconclusive  
- unavoidable coating variations may influence the determination

Information on storage conditions and production date of the tested sample is unavailable and thus Cr(VI) results represent status of the sample at the time of testing.

- (4) Restricted substances and maximum concentration values tolerated by weight in homogeneous materials under RoHS Directive: Cd: 0.01%, Pb/Hg/Cr(VI)/PBBs/PBDEs/DEHP/DBP/BBP/DIBP: 0.1%. The limit is quoted from RoHS Directive (EU) 2015/863.

- (5) IEC 62321 series is equivalent to EN 62321 series.

[https://www.cenelec.eu/dyn/www/f?p=104:30:1742232870351101:::FSP\\_ORG\\_ID,FSP\\_LANG\\_ID:1258637,25](https://www.cenelec.eu/dyn/www/f?p=104:30:1742232870351101:::FSP_ORG_ID,FSP_LANG_ID:1258637,25)



Unless otherwise agreed in writing, this document is issued by the Company subject to its General Conditions of Service printed overleaf, available on request or accessible at <http://www.sgs.com/en/Terms-and-Conditions.aspx> and, for electronic format documents, subject to Terms and Conditions for Electronic Documents at <http://www.sgs.com/en/Terms-and-Conditions/Terms-e-Document.aspx>. Attention is drawn to the limitation of liability, indemnification and jurisdiction issues defined therein. Any holder of this document is advised that information contained hereon reflects the Company's findings at the time of its intervention only and within the limits of Client's instructions, if any. The Company's sole responsibility is to its Client and this document does not exonerate parties to a transaction from exercising all their rights and obligations under the transaction documents. This document cannot be reproduced except in full, without prior written approval of the Company. Any unauthorized alteration, forgery or falsification of the content or appearance of this document is unlawful and offenders may be prosecuted to the fullest extent of the law. Unless otherwise stated the results shown in this test report refer only to the sample(s) tested.

Attention: To check the authenticity of testing /inspection report & certificate, please contact us at telephone: (86-755) 8307 1443, or email: [CN.Doccheck@sgs.com](mailto:CN.Doccheck@sgs.com)

SGS Mansion, No.41, The 5th Avenue TEDA, Tianjin, China 300457  
中国·天津市经济技术开发区第五大街41号SGS大厦

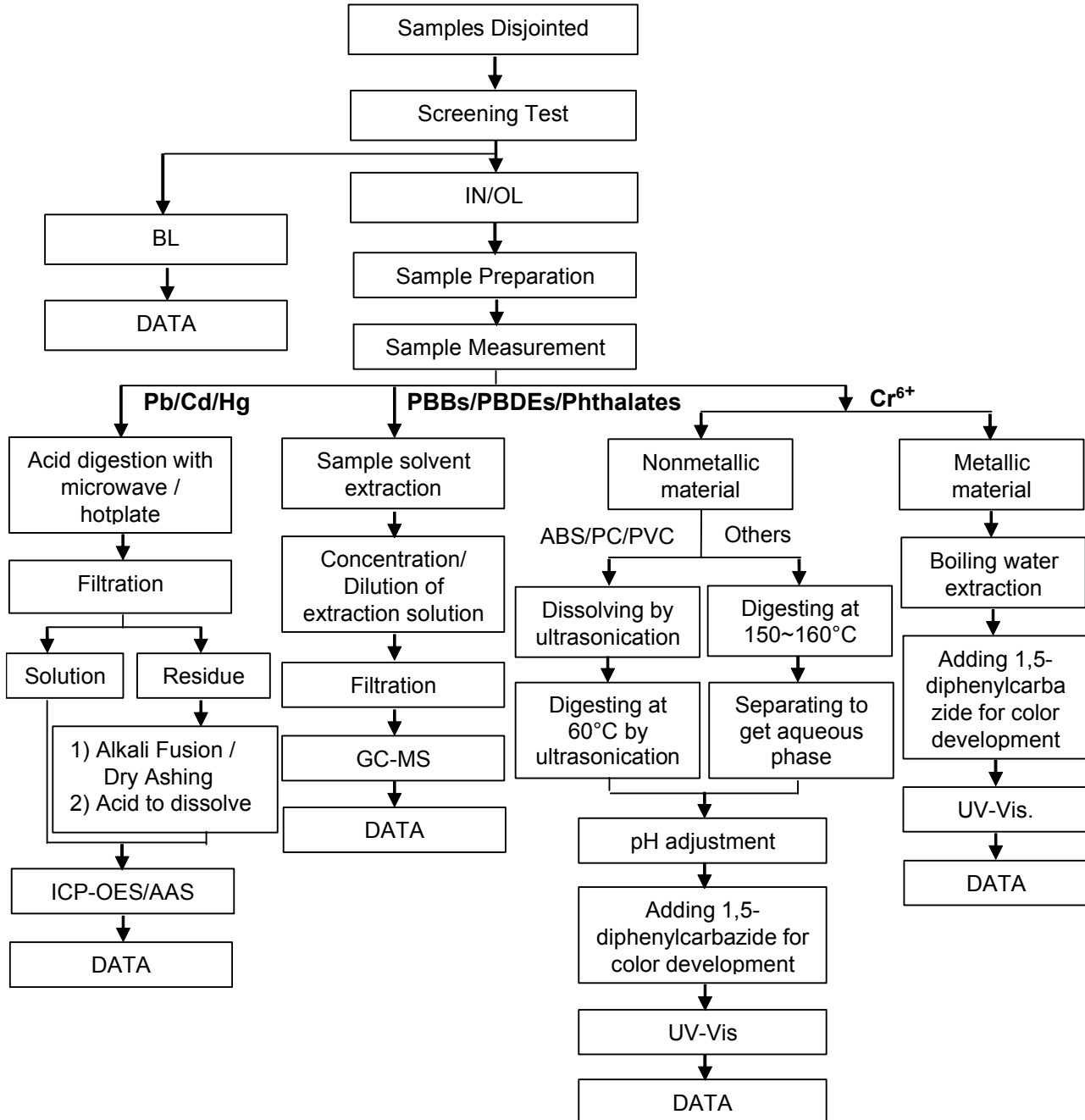
t (86-22) 65288000  
t (86-22) 65288000

[www.sgsgroup.com.cn](http://www.sgsgroup.com.cn)  
[sgs.china@sgs.com](mailto:sgs.china@sgs.com)

**ATTACHMENTS**

**Pb/Cd/Hg/Cr<sup>6+</sup>/PBBs/PBDEs/Phthalates XRF Testing Flow Chart**

1) These samples were dissolved totally by pre-conditioning method according to below flow chart. (Cr<sup>6+</sup> and PBBs/PBDEs /Phthalates test method excluded)



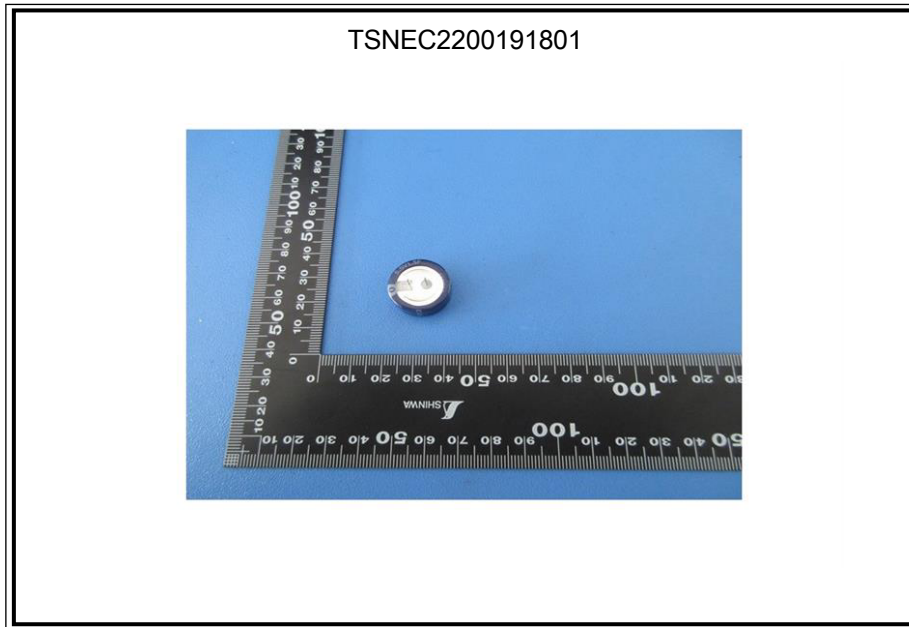
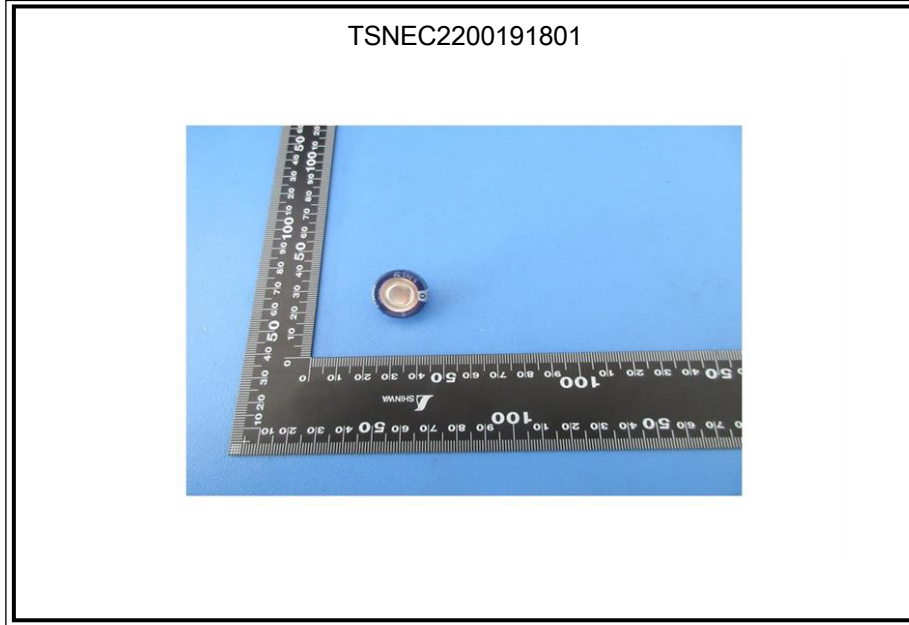
Unless otherwise agreed in writing, this document is issued by the Company subject to its General Conditions of Service printed overleaf, available on request or accessible at <http://www.sgs.com/en/Terms-and-Conditions.aspx> and, for electronic format documents, subject to Terms and Conditions for Electronic Documents at <http://www.sgs.com/en/Terms-and-Conditions/Terms-e-Document.aspx>. Attention is drawn to the limitation of liability, indemnification and jurisdiction issues defined therein. Any holder of this document is advised that information contained hereon reflects the Company's findings at the time of its intervention only and within the limits of Client's instructions, if any. The Company's sole responsibility is to its Client and this document does not exonerate parties to a transaction from exercising all their rights and obligations under the transaction documents. This document cannot be reproduced except in full, without prior written approval of the Company. Any unauthorized alteration, forgery or falsification of the content or appearance of this document is unlawful and offenders may be prosecuted to the fullest extent of the law. Unless otherwise stated the results shown in this test report refer only to the sample(s) tested.

Attention: To check the authenticity of testing /inspection report & certificate, please contact us at telephone: (86-755) 8307 1443, or email: [CN.Doccheck@sgs.com](mailto:CN.Doccheck@sgs.com)

SGS Mansion, No.41, The 5th Avenue TEDA, Tianjin, China 300457  
中国·天津市经济技术开发区第五大街41号SGS大厦 邮编: 300457

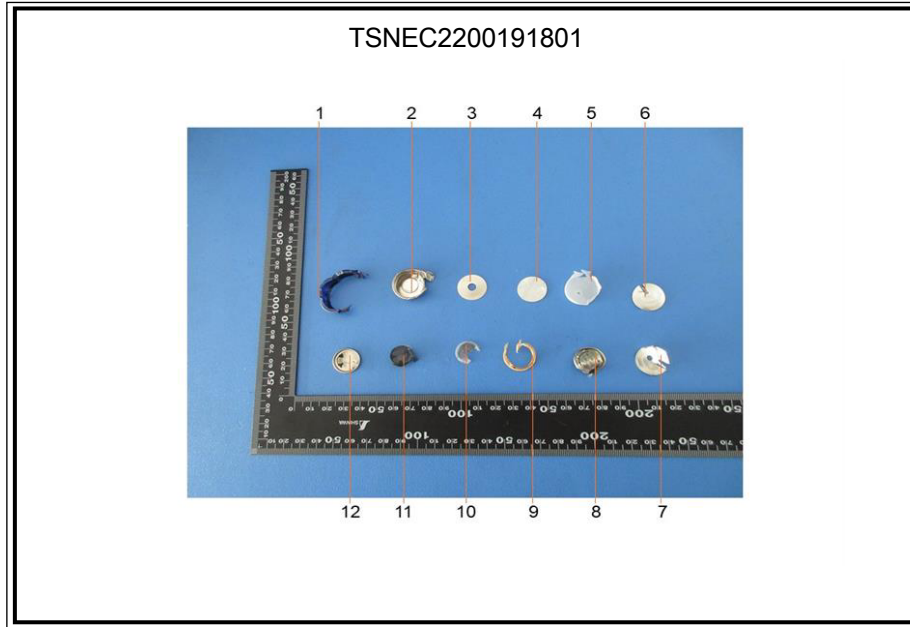
t (86-22) 65288000 www.sgs.com.cn  
t (86-22) 65288000 sgs.china@sgs.com

Sample photo:



Unless otherwise agreed in writing, this document is issued by the Company subject to its General Conditions of Service printed overleaf, available on request or accessible at <http://www.sgs.com/en/Terms-and-Conditions.aspx> and, for electronic format documents, subject to Terms and Conditions for Electronic Documents at <http://www.sgs.com/en/Terms-and-Conditions/Terms-e-Document.aspx>. Attention is drawn to the limitation of liability, indemnification and jurisdiction issues defined therein. Any holder of this document is advised that information contained hereon reflects the Company's findings at the time of its intervention only and within the limits of Client's instructions, if any. The Company's sole responsibility is to its Client and this document does not exonerate parties to a transaction from exercising all their rights and obligations under the transaction documents. This document cannot be reproduced except in full, without prior written approval of the Company. Any unauthorized alteration, forgery or falsification of the content or appearance of this document is unlawful and offenders may be prosecuted to the fullest extent of the law. Unless otherwise stated the results shown in this test report refer only to the sample(s) tested.

Attention: To check the authenticity of testing /inspection report & certificate, please contact us at telephone: (86-755) 8307 1443, or email: [CN.Doccheck@sgs.com](mailto:CN.Doccheck@sgs.com)



SGS authenticate the photo on original report only

\*\*\* End of Report \*\*\*

