

JINZHOU KAIMEI POWER CO.,LTD
NO.139.7 SECTION CHONGQING ROAD,LINGHE DISTRICT, JINZHOU CITY,
LIAONING PROVINCE, CHINA.

Sample Name: COIN-TYPE SUPERCAPACITOR

SGS Ref: TP21-000356-TJ

Verification Period: 20 Jan 2021 –18 Feb 2021

Verification Requested : With reference to the client's request., verify chlorine and bromine concentration of the submitted sample.

Verification Method : Test was performed for the samples indicated by the photos in the report with below test methods:

- (1) Screening by XRF Spectroscopy;
- (2) Wet Chemical Test Method:

With reference to EN 14582:2016, determination of Chlorine and Bromine by IC.

Verification Summary : Based on the verification results of the submitted sample, each homogenous material subject to verification in the submitted sample has a maximum concentration of 900mg/kg bromine or chlorine and a maximum concentration of 1500mg/kg total chlorine and bromine.

Signed for and on behalf of
SGS-CSTC Standards Technical Services (Tianjin) Co., Ltd.



Jason Li
Approved Signatory



Unless otherwise agreed in writing, this document is issued by the Company subject to its General Conditions of Service printed overleaf, available on request or accessible at <http://www.sgs.com/en/Terms-and-Conditions.aspx> and, for electronic format documents, subject to Terms and Conditions for Electronic Documents at <http://www.sgs.com/en/Terms-and-Conditions/Terms-e-Document.aspx>. Attention is drawn to the limitation of liability, indemnification and jurisdiction issues defined therein. Any holder of this document is advised that information contained hereon reflects the Company's findings at the time of its intervention only and within the limits of Client's instructions, if any. The Company's sole responsibility is to its Client and this document does not exonerate parties to a transaction from exercising all their rights and obligations under the transaction documents. This document cannot be reproduced except in full, without prior written approval of the Company. Any unauthorized alteration, forgery or falsification of the content or appearance of this document is unlawful and offenders may be prosecuted to the fullest extent of the law. Unless otherwise stated the results shown in this test report refer only to the sample(s) tested.

Attention: To check the authenticity of testing /inspection report & certificate, please contact us at telephone: (86-755) 8307 1443, or email: CN.Doccheck@sgs.com

SGS Mansion, No.41, The 5th Avenue TEDA, Tianjin, China 300457
中国·天津市经济技术开发区第五大街41号SGS大厦 邮编: 300457

t (86-22) 65288000 www.sgsgroup.com.cn
t (86-22) 65288000 sgs.china@sgs.com



In accordance with the result of material risk assessment, the following disjointed parts in the submitted sample have been verified.

Details on Verification

Part No.	Part Description	BOM No.	Restricted Substances	Results of EDXRF ⁽¹⁾	Results of IC Testing ⁽²⁾ (mg/kg)	Cl/Br ≤ 900 mg/kg	Cl+Br ≤ 1500 mg/kg	Sample Submitted / Resubmitted Date
1	Blue plastic		Cl	BL	---	Comply	Comply	20 Jan 2021
			Br	BL	---	Comply		
2	White plastic		Cl	BL	---	Comply	Comply	20 Jan 2021
			Br	BL	---	Comply		
3	Gray plastic		Cl	BL	---	Comply	Comply	20 Jan 2021
			Br	BL	---	Comply		
4	Black solid		Cl	BL	---	Comply	Comply	20 Jan 2021
			Br	BL	---	Comply		
5	White paper		Cl	BL	---	Comply	Comply	20 Jan 2021
			Br	BL	---	Comply		



Unless otherwise agreed in writing, this document is issued by the Company subject to its General Conditions of Service printed overleaf, available on request or accessible at <http://www.sgs.com/en/Terms-and-Conditions.aspx> and, for electronic format documents, subject to Terms and Conditions for Electronic Documents at <http://www.sgs.com/en/Terms-and-Conditions/Terms-e-Documents.aspx>. Attention is drawn to the limitation of liability, indemnification and jurisdiction issues defined therein. Any holder of this document is advised that information contained hereon reflects the Company's findings at the time of its intervention only and within the limits of Client's instructions, if any. The Company's sole responsibility is to its Client and this document does not exonerate parties to a transaction from exercising all their rights and obligations under the transaction documents. This document cannot be reproduced except in full, without prior written approval of the Company. Any unauthorized alteration, forgery or falsification of the content or appearance of this document is unlawful and offenders may be prosecuted to the fullest extent of the law. Unless otherwise stated the results shown in this test report refer only to the sample(s) tested.

Attention: To check the authenticity of testing / inspection report & certificate, please contact us at telephone: (86-755) 8307 1443, or email: CN.Doccheck@sgs.com

SGS Mansion, No.41, The 5th Avenue TEDA, Tianjin, China 300457
 中国·天津市经济技术开发区第五大街41号SGS大厦 邮编: 300457

t (86-22) 65288000 www.sgsgroup.com.cn
 t (86-22) 65288000 sgs.china@sgs.com

Remark

(1) (a) Results are obtained by EDXRF for primary screening, and further chemical testing by IC for Cl, Br.
(unit: mg/kg)

Element	Judgement
Cl	$BL \leq (400 - 3\sigma) < IN$
Br	$BL \leq (600 - 3\sigma) < IN < (1300 + 3\sigma) \leq OL$

(b) BL = Below Limit, OL = Over Limit, IN = Inconclusive.

(c) The XRF screening test for Cl, Br elements – The reading may be different to the actual content in the sample be of non-uniformity composition.

(2) (a) mg/kg = ppm = 0.0001%, ND = Not Detected (<MDL), --- = Not Conducted.

(b) Unit and Method Detection Limit (MDL) in IC test

Test Items	Cl	Br
Units	mg/kg	mg/kg
MDL	50	50

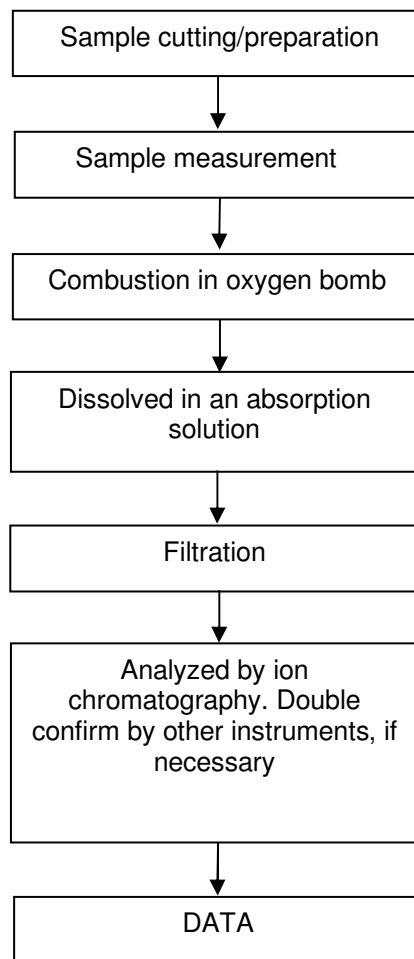


Unless otherwise agreed in writing, this document is issued by the Company subject to its General Conditions of Service printed overleaf, available on request or accessible at <http://www.sgs.com/en/Terms-and-Conditions.aspx> and, for electronic format documents, subject to Terms and Conditions for Electronic Documents at <http://www.sgs.com/en/Terms-and-Conditions/Terms-e-Document.aspx>. Attention is drawn to the limitation of liability, indemnification and jurisdiction issues defined therein. Any holder of this document is advised that information contained hereon reflects the Company's findings at the time of its intervention only and within the limits of Client's instructions, if any. The Company's sole responsibility is to its Client and this document does not exonerate parties to a transaction from exercising all their rights and obligations under the transaction documents. This document cannot be reproduced except in full, without prior written approval of the Company. Any unauthorized alteration, forgery or falsification of the content or appearance of this document is unlawful and offenders may be prosecuted to the fullest extent of the law. Unless otherwise stated the results shown in this test report refer only to the sample(s) tested.

Attention: To check the authenticity of testing /inspection report & certificate, please contact us at telephone: (86-755) 8307 1443, or email: CN.Doccheck@sgs.com

ATTACHMENTS

Halogen Testing Flow Chart



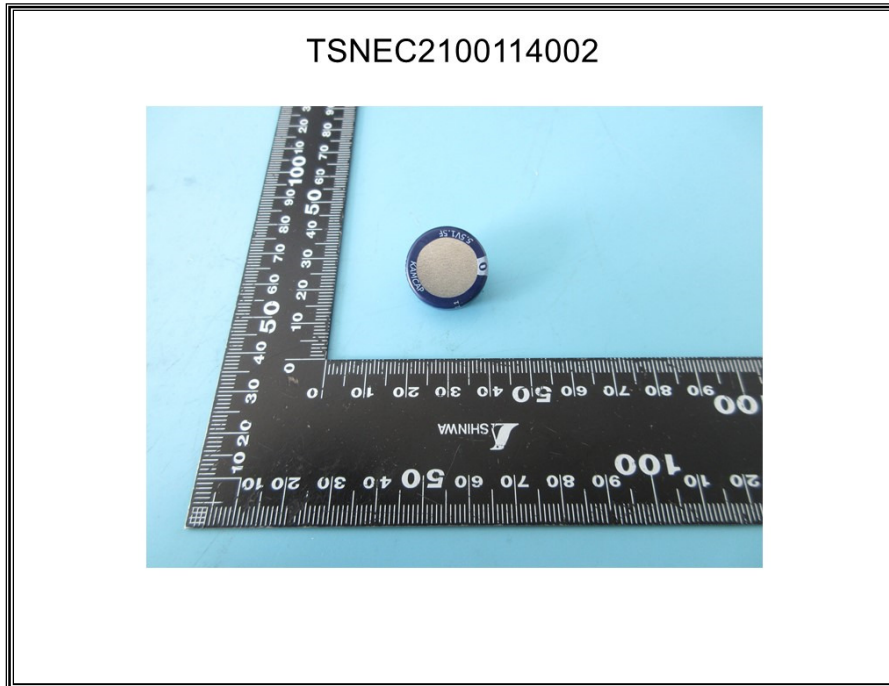
Unless otherwise agreed in writing, this document is issued by the Company subject to its General Conditions of Service printed overleaf, available on request or accessible at <http://www.sgs.com/en/Terms-and-Conditions.aspx> and, for electronic format documents, subject to Terms and Conditions for Electronic Documents at <http://www.sgs.com/en/Terms-and-Conditions/Terms-e-Documents.aspx>. Attention is drawn to the limitation of liability, indemnification and jurisdiction issues defined therein. Any holder of this document is advised that information contained hereon reflects the Company's findings at the time of its intervention only and within the limits of Client's instructions, if any. The Company's sole responsibility is to its Client and this document does not exonerate parties to a transaction from exercising all their rights and obligations under the transaction documents. This document cannot be reproduced except in full, without prior written approval of the Company. Any unauthorized alteration, forgery or falsification of the content or appearance of this document is unlawful and offenders may be prosecuted to the fullest extent of the law. Unless otherwise stated the results shown in this test report refer only to the sample(s) tested.

Attention: To check the authenticity of testing /inspection report & certificate, please contact us at telephone: (86-755) 8307 1443, or email: CN.Doccheck@sgs.com

SGS Mansion, No.41, The 5th Avenue TEDA, Tianjin, China 300457
 中国·天津市经济技术开发区第五大街41号SGS大厦 邮编: 300457

t (86-22) 65288000 www.sgs.com.cn
 t (86-22) 65288000 sgs.china@sgs.com

Sample photo:



Unless otherwise agreed in writing, this document is issued by the Company subject to its General Conditions of Service printed overleaf, available on request or accessible at <http://www.sgs.com/en/Terms-and-Conditions.aspx> and, for electronic format documents, subject to Terms and Conditions for Electronic Documents at <http://www.sgs.com/en/Terms-and-Conditions/Terms-e-Document.aspx>. Attention is drawn to the limitation of liability, indemnification and jurisdiction issues defined therein. Any holder of this document is advised that information contained hereon reflects the Company's findings at the time of its intervention only and within the limits of Client's instructions, if any. The Company's sole responsibility is to its Client and this document does not exonerate parties to a transaction from exercising all their rights and obligations under the transaction documents. This document cannot be reproduced except in full, without prior written approval of the Company. Any unauthorized alteration, forgery or falsification of the content or appearance of this document is unlawful and offenders may be prosecuted to the fullest extent of the law. Unless otherwise stated the results shown in this test report refer only to the sample(s) tested.

Attention: To check the authenticity of testing /inspection report & certificate, please contact us at telephone: (86-755) 8307 1443, or email: CN.Doccheck@sgs.com

SGS Mansion, No.41, The 5th Avenue TEDA, Tianjin, China 300457
 中国·天津市经济技术开发区第五大街41号SGS大厦 邮编: 300457

t (86-22) 65288000 www.sgs.com
 t (86-22) 65288000 sgs.china@sgs.com



SGS authenticate the photo on original report only
 *** End of Report ***



Unless otherwise agreed in writing, this document is issued by the Company subject to its General Conditions of Service printed overleaf, available on request or accessible at <http://www.sgs.com/en/Terms-and-Conditions.aspx> and, for electronic format documents, subject to Terms and Conditions for Electronic Documents at <http://www.sgs.com/en/Terms-and-Conditions/Terms-e-Document.aspx>. Attention is drawn to the limitation of liability, indemnification and jurisdiction issues defined therein. Any holder of this document is advised that information contained hereon reflects the Company's findings at the time of its intervention only and within the limits of Client's instructions, if any. The Company's sole responsibility is to its Client and this document does not exonerate parties to a transaction from exercising all their rights and obligations under the transaction documents. This document cannot be reproduced except in full, without prior written approval of the Company. Any unauthorized alteration, forgery or falsification of the content or appearance of this document is unlawful and offenders may be prosecuted to the fullest extent of the law. Unless otherwise stated the results shown in this test report refer only to the sample(s) tested.

Attention: To check the authenticity of testing /inspection report & certificate, please contact us at telephone: (86-755) 8307 1443, or email: CN.Doccheck@sgs.com

SGS Mansion, No.41, The 5th Avenue TEDA, Tianjin, China 300457
 中国·天津市经济技术开发区第五大街41号SGS大厦 邮编: 300457

t (86-22) 65288000 www.sgs.com.cn
 t (86-22) 65288000 sgs.china@sgs.com